

Assembly Instructions M8141-E

Conversion kits air extractor 250T3 (u/ID 27164)

Purpose

Converting air extractor duct

Precondition



WARNING!

Danger for unauthorized persons!

Conversion work may only be carried out by specialist staff who have been trained accordingly.

Therefore:

- Keep unauthorized persons away from the work area.



NOTE!

Knowledge of the Instruction Manual is a precondition for carrying out conversion work on the unit.

Procedure



DANGER!

Danger to life caused by electric current!

Touching conductive parts causes a direct danger to life.

Therefore:

- Remove the plug from the mains before carrying out any work on the unit.



WARNING!

Danger of crushing due to rolling away or tipping

With an uneven floor or when the castors are not locked, there is a danger that the unit tips over or rolls away causing crushing.

Therefore:

- Only install the unit on an even floor.
- Ensure that the castors are locked.

1. Proceed as follows in order to cool down the unit and empty the mould (mould evacuation)
 - Display menu page **Functions**.
 - Select the function **Cooling** and activate with the **OK** key.
 - Select the function **Mould evacuation** and activate with the **OK** key.

→ The activated function is indicated with the **✓** symbol.

2. Main switch off, remove the plug from the mains.
3. Remove the cover from the unit (see Instruction Manual Chapter Maintenance).
4. Remove mounting straps (Label 1 → Fig. 1) and insulation (Label 2 → Fig. 1).

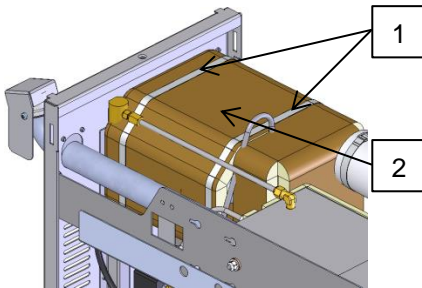


Fig. 1: Remove insulation on 250T3

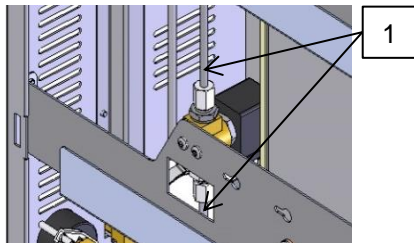


Fig. 2: Remove air extractor duct

5. To remove the air extractor duct, proceed as follows:
 - Loosen screw connections on pipe elbows (Label1 → Fig. 2) and remove air extractor ducts completely.
 - Remove vent valve (YV 1) using 2x screws.



NOTICE!

Valve connector may not be removed.

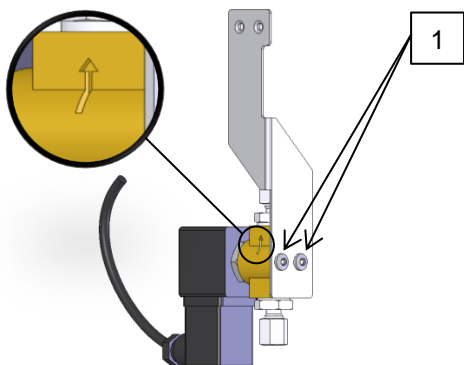


Fig. 3: Mount solenoid valve (YV 1)

6. To mount the solenoid valve (YV 1) in the new position, please proceed as follows:
 - Attach mounting bracket to solenoid valve (YV 1). The arrow on the solenoid valve must be pointing upwards.
 - Mount 2x screws (Label 1 → Fig. 3).

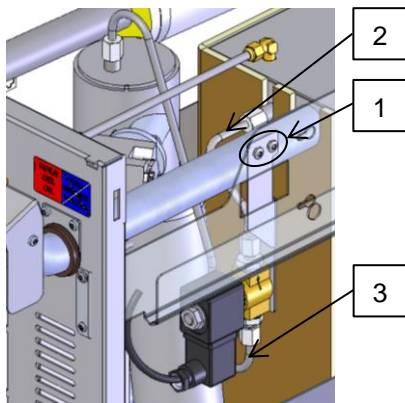


Fig. 4: Attach mounting bracket with solenoid valve (YV 1)

- Attach mounting bracket with solenoid valve to the upper stay with 2x screws (Label 1 → Fig. 4).
- Attach new pipe elbow (Label 2 → Fig. 4) and tighten 2x screw connections.
- Attach new pipe elbow (Label 3 → Fig. 4) and tighten 2x screw connections.

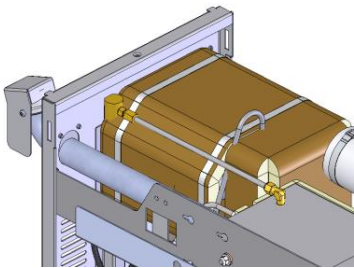




Fig. 5: Attach insulation on 250T3

7. Attach insulation and mounting straps as shown in Fig. 5.

8. Reconnect mains plug and switch on main switch.
9. Press the  key to switch on the unit and check it for leaks.
10. Check unit functions.
11. Switch the unit off by press the  key.
12. Main switch off.
13. Close the unit correctly again.

Parts list

| Pos | Description | O/ID | Pcs |
|-----|--|----------|-----|
| 01 | Angle 32x160x34,5x1,5 (mounted) | 27152 | 1 |
| 02 | Screw ISO 7380 M5x8-Torx-8.8 verz. (mounted) | B1678183 | 2 |
| 03 | Pipeline 2 6x1 | 27150 | 1 |
| 04 | Pipeline 3 6x1 | 27151 | 1 |
| 05 | Connecting nut 6i-M12i-St (mounted) | 17184 | 4 |
| 06 | Clamping ring 6i-St (mounted) | 15598 | 4 |
| 07 | Assembly instructions German | M8141-D | 1 |
| 08 | Assembly instructions English | M8141-E | 1 |
| 09 | Assembly instructions French | M8141-F | 1 |