

Assembly Instructions M8079-EN

Spare part filter

Purpose

Positioning filter

Precondition



WARNING!

Danger for unauthorized persons!

Conversion work may only be carried out by specialist staff who have been trained accordingly.

Therefore:

- Keep unauthorized persons away from the work area.



NOTE!

Knowledge of the Instruction Manual is a precondition for carrying out conversion work on the unit.

Connection

Thermo-5

- Connect filter with direction arrow (→ arrow on housing) in the direction of the unit to connection main line A (OUT).
- Align the cleaning opening with the filter insert downwards.



Fig. 1: Connection for Thermo-5 units

Series 4

- Connect filter with direction arrow (→ arrow on housing) in the direction of the unit to connection return line B (IN).
- Align the cleaning opening with the filter insert downwards.

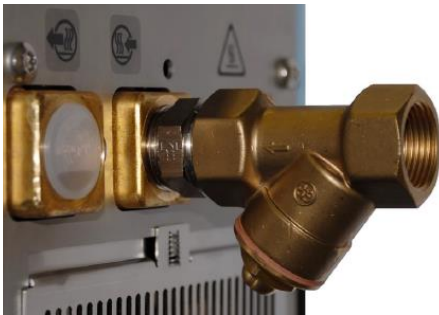


Fig. 2: Connection for Series 4 units